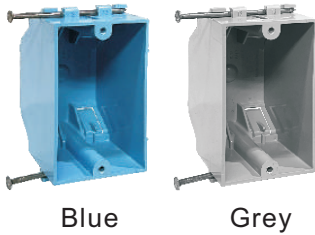


DIVISION CONSTRUCTION
SUPPLY, INC.



**ELECTRICAL
SWITCH &
OUTLET
BOXES**

NEW WORK PLASTIC OUTLET BOX



One-Gang

Part No.	Cubic Capacity	Description	Size (L×W×D)
DCB01N	18 cu in Four Integral Clamps	Switch/Outlet Box; New Work; 1 Gang; Captive Nail And Bracket Mounting; For Use With Non-Metallic Sheathed Cable.	3-3/4"×2-1/4"×2-7/8"



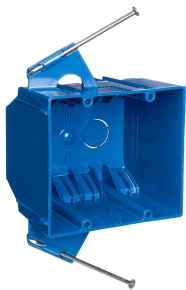
One-Gang

Part No.	Cubic Capacity	Description	Size (L×W×D)
DCB118N	18 cu in With Four Knockouts	Deep Switch/Outlet Box; New Work; 1 Gang; Captive Nail And Bracket Mounting; For Use With Non-Metallic Sheathed Cable.	3-3/4"×2-1/4"×2-7/8"



One-Gang

Part No.	Cubic Capacity	Description	Size (L×W×D)
DCB120N	20 cu in Four Knockouts	Deep Switch/Outlet Box; New Work; 1 Gang; Captive Nail And Bracket Mounting; For Use With Non-Metallic Sheathed Cable.	3-3/4"×2-1/4"×3-1/4"



Two-Gang

Part No.	Cubic Capacity	Description	Size (L×W×D)
DCB02N	32 cu in Six Integral Clamps	Switch/Outlet Box; New Work; 2 Gang; Captive Nail And Bracket Mounting; For Use With Non-Metallic Sheathed Cable.	4"×3-3/4"×3"



Three-Gang

Part No.	Cubic Capacity	Description	Size (L×W×D)
DCB344N	44 cu in Ten Integral Clamps	Switch/Outlet Box; New Work; 3 Gang; Captive Nail And Bracket Mounting; For Use With Non-Metallic Sheathed Cable.	5-7/8"×3-3/4"×2-3/4"



Four-Gang

Part No.	Cubic Capacity	Description	Size (L×W×D)
DCB455N	55 cu in Fourteen Integral Clamps	Switch/Outlet Box; New Work; 4 Gang; Captive Nail And Bracket Mounting; For Use With Non-Metallic Sheathed Cable.	7-7/10"×3-3/4"×2-3/4"

Nonmetallic Outlet Boxes, Flush-Device Boxes, and Covers [UL 514C:2014 Ed.4+R:18Aug2020]

CEILING BOX

Round



Part No.	Cubic Capacity	Description	Size (L×W×D)
DCBR18-3	18 cu in Six Integral Clamps	Round Ceiling/Fixture Box; New Work; Captive Nail And Bracket Mounting; For Use With Non-Metallic Sheathed Cable.	3"x3"x2.75"

Round



Part No.	Cubic Capacity	Description	Size (L×W×D)
DCB05N	20 cu in Six Integral Clamps	Round Ceiling/Fixture Box; New Work; Captive Nail And Bracket Mounting; For Use With Non-Metallic Sheathed Cable.	4 Dia×2-1/4"

Round



Part No.	Cubic Capacity	Description	Size (L×W×D)
DCB05GN	20 cu in Grounding Six Integral Clamps	Round Ceiling/Fixture Box with Grounding ; New Work; Captive Nail And Bracket Mounting; For Use With Non-Metallic Sheathed Cable.	4 Dia×2-1/4"

Bar Hanger:14.25" -22.5"



Part No.	Cubic Capacity	Description	Size (L×W×D)
DCB06N	20 cu in Six Integral Clamps	Round Ceiling/Fixture Box With 14.25"-22.5" Bar Hanger; Captive Nail And Bracket Mounting; For Use With Non-Metallic Sheathed Cable.	4 Dia×2-1/4"

Bar Hanger:16" -24"



Part No.	Cubic Capacity	Description	Size (L×W×D)
DCB06NL	20 cu in Six Integral Clamps	Round Ceiling/Fixture Box With 16"-24" Bar Hanger; Captive Nail And Bracket Mounting; For Use With Non-Metallic Sheathed Cable.	4 Dia×2-1/4"

Bar Hanger:16" -24" with Grounding



Part No.	Cubic Capacity	Description	Size (L×W×D)
DCB06NGL	20 cu in Six Integral Clamps	Round Ceiling/Fixture Box With 16"-24" Bar Hanger with Grounding ; Captive Nail And Bracket Mounting; For Use With Non-Metallic Sheathed Cable.	4 Dia×2-1/4"

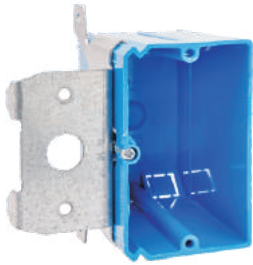
Nonmetallic Outlet Boxes, Flush-Device Boxes, and Covers [UL 514C:2014 Ed.4+R:18Aug2020]

DEEP NEW WORK PLASTIC OUTLET BOX



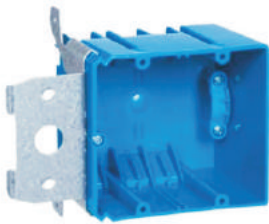
One-Gang

Part No.	Cubic Capacity	Description	Size (L×W×D)
DCB123SB	20.3 cu in Four Integral Clamps	Deep Switch/Outlet Box; 1 Gang; Steel Stud Bracket & Wire Clamps; For Use With Non-Metallic Sheathed Cable.	3-3/4"×2-1/4"×3-1/10"



One-Gang

Part No.	Cubic Capacity	Description	Size (L×W×D)
DCB121-ADJ	21 cu in With Four Knockouts	Deep Switch/Outlet Box; 1 Gang; Adjustable Steel Stud Bracket & Wire Clamps; For Use With Non-Metallic Sheathed Cable.	3-3/4"×2-1/4"×3-3/10"



Two-Gang

Part No.	Cubic Capacity	Description	Size (L×W×D)
DCB234-ADJ	34 cu in With Four Knockouts	Deep Switch/Outlet Box; 2 Gang; Adjustable Steel Stud Bracket & Wire Clamps; For Use With Non-Metallic Sheathed Cable.	4.05"×3.65"×3"



Three-Gang

Part No.	Cubic Capacity	Description	Size (L×W×D)
DCB349-ADJ	49 cu in With Four Knockouts	Deep Switch/Outlet Box; 3 Gang; Adjustable Steel Stud Bracket & Wire Clamps; For Use With Non-Metallic Sheathed Cable.	5.9"×3.6"×3"



One-Gang

Part No.	Cubic Capacity	Description	Size (L×W×D)
DCB121-ADJ-E	21 cu in With Four Knockouts	Deep Switch/Outlet Box; 1 Gang; Adjustable Steel Stud Bracket & Wire Clamps; For Use With Non-Metallic Sheathed Cable.	2.3"×3.7"×3.3"



Two-Gang

Part No.	Cubic Capacity	Description	Size (L×W×D)
DCB232-B	32 cu in Six Integral Clamps	New Work 2Gang 32 cu in Bracket Flange for wood & steel stud mounting	4"×3.75"×3"

Nonmetallic Outlet Boxes, Flush-Device Boxes, and Covers [UL 514C:2014 Ed.4+R:18Aug2020]

DEEP NEW WORK PLASTIC OUTLET BOX



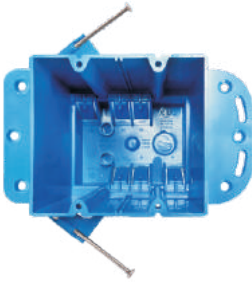
One-Gang

Part No.	Cubic Capacity	Description	Size (L×W×D)
DCB123N	23 cu in Four Knockouts	Deep Switch/Outlet Box; New Work; 1 Gang; Captive Nail And Bracket Mounting; For Use With Non-Metallic Sheathed Cable.	3-3/4"×2-1/4"×3-1/2"



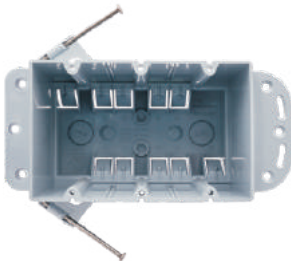
One-Gang

Part No.	Cubic Capacity	Description	Size (L×W×D)
DCB01DN	23 cu in Four Integral Clamps	Deep Switch/Outlet Box; New Work; 1 Gang; Captive Nail And Bracket Mounting; For Use With Non-Metallic Sheathed Cable.	3-3/4"×2-1/4"×3-1/2"



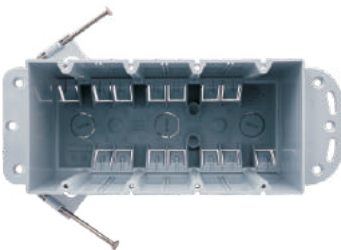
Two-Gang

Part No.	Cubic Capacity	Description	Size (L×W×D)
DCB02DN	44 cu in Six Integral Clamps	Deep Switch/Outlet Box; New Work; 2 Gang; Captive Nail And Bracket Mounting; For Use With Non-Metallic Sheathed Cable.	4"×3-3/4"×4"



Three-Gang

Part No.	Cubic Capacity	Description	Size (L×W×D)
DCB03DN	68 cu in Ten Integral Clamps	Deep Switch/Outlet Box; New Work; 3 Gang; Captive Nail And Bracket Mounting; For Use With Non-Metallic Sheathed Cable.	5-7/8"×3-3/4"×4"



Four-Gang

Part No.	Cubic Capacity	Description	Size (L×W×D)
DCB04DN	87 cu in Fourteen Integral Clamps	Deep Switch/Outlet Box; New Work; 4 Gang; Captive Nail And Bracket Mounting; For Use With Non-Metallic Sheathed Cable.	7-7/10"×3-3/4"×4"



Ceiling Box

Part No.	Cubic Capacity	Description	Size (L×W×D)
DCCFB-1	13.4 cu in Two Knockouts	Fits any ceiling fan up to 70 lbs. or lighting fixture up to 150 lbs. Electrical box measures 4 in. high by 1/2 in. deep; 13.4 cu in. capacity	4"×1 1/2"×4"

OLD WORK PLASTIC OUTLET BOX

One-Gang



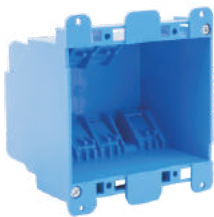
Part No.	Cubic Capacity	Description	Size (L×W×D)
DCB010	14 cu in Four Integral Clamps	Switch/Outlet Box; Old Work; 1 Gang; Swing Clamp And Ears Mounting; For Use With Non-Metallic Sheathed Cable; Suitable For Masonry Walls.	4-3/10"×2-1/4"×2-3/4"

One-Gang



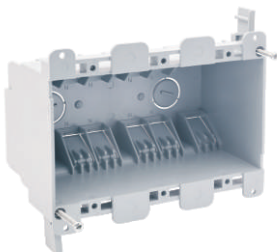
Part No.	Cubic Capacity	Description	Size (L×W×D)
DCB010-20	20 cu in Four Integral Clamps	Deep Switch/Outlet Box; Old Work; 1 Gang; Swing Clamp And Ears Mounting; For Use With Non-Metallic Sheathed Cable; Suitable For Masonry Walls.	4-3/10"×2-1/4"×3-1/4"

Two-Gang



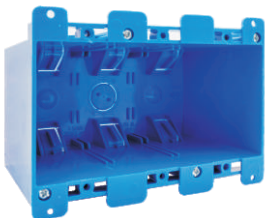
Part No.	Cubic Capacity	Description	Size (L×W×D)
DCB020	25 cu in Six Integral Clamps	Switch/Outlet Box; Old Work; 2 Gang; Swing Clamp And Ears Mounting; For Use With Non-Metallic Sheathed Cable; Suitable For Masonry Walls.	4"×3-3/4"×2-3/4"

Three-Gang



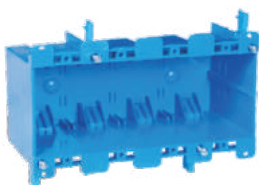
Part No.	Cubic Capacity	Description	Size (L×W×D)
DCB030	38 cu in Ten Integral Clamps	Switch/Outlet Box; Old Work; 3 Gang; Swing Clamp And Ears Mounting; For Use With Non-Metallic Sheathed Cable; Suitable For Masonry Walls.	5-7/10"×3-3/4"×2-3/4"

Three-Gang



Part No.	Cubic Capacity	Description	Size (L×W×D)
DCB030D	55 cu in Ten Integral Clamps	Switch/Outlet Box; Old Work; 3 Gang; Swing Clamp And Ears Mounting; For Use With Non-Metallic Sheathed Cable; Suitable For Masonry Walls.	5-7/10"×3-3/4"×2-3/4"

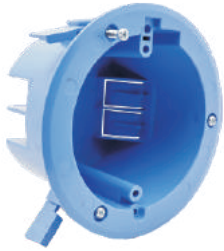
Four-Gang



Part No.	Cubic Capacity	Description	Size (L×W×D)
DCB040	69.8 cu in Fourteen Integral Clamps	Switch/Outlet Box; Old Work; 4 Gang; Swing Clamp And Ears Mounting; For Use With Non-Metallic Sheathed Cable; Suitable For Masonry Walls.	7-7/10"×3-3/4"×3-1/2"

Nonmetallic Outlet Boxes, Flush-Device Boxes, and Covers [UL 514C:2014 Ed.4+R:18Aug2020]

OLD WORK PLASTIC OUTLET BOX



Round

Part No.	Cubic Capacity	Description	Size (L×W×D)
DCB050	18 cu in Six Integral Clamps	Round Ceiling/Fixture Box; Old Work; Captive Nail And Bracket Mounting; For Use With Non-Metallic Sheathed Cable.	4-1/4"×Dia×2-1/2"



Round

Part No.	Cubic Capacity	Description	Size (L×W×D)
DCB050G	18 cu in Six Integral Clamps With Grounding	Round Ceiling/Fixture Box Grounding; Old Work; Captive Nail And Bracket Mounting; For Use With Non-Metallic Sheathed Cable.	4-1/4"×Dia×2-1/2"



One-Gang

Part No.	Cubic Capacity	Description	Size (L×W×D)
DCB108-OW	8 cu in Four Knockouts	Old Work 1Gang 8 cu in Shallow Box	2.4"×3.65"×1.25"



One-Gang

Part No.	Cubic Capacity	Description	Size (L×W×D)
DCB117-OW	17 cu in Four Knockouts	Old Work 1Gang 17 cu in Shallow Box with side compartment	2"×4"×2"

Nonmetallic Outlet Boxes, Flush-Device Boxes, and Covers [UL 514C:2014 Ed.4+R:18Aug2020]

OUTLET BOX EXTENDER

One-Gang



Part No.	Description	Size (L×W×D)
DCEXR-01	Single gang electrical outlet box extender	2.43"×4.28"×1.85"

Two-Gang



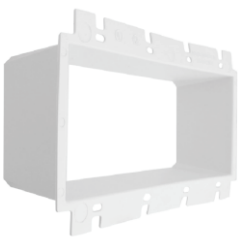
Part No.	Description	Size (L×W×D)
DCEXR-02	Two gang electrical outlet box extender	4.32"×4.28"×1.85"

Three-Gang



Part No.	Description	Size (L×W×D)
DCEXR-03	Three gang electrical outlet box extender	6.13"×4.28"×1.85"

Four-Gang



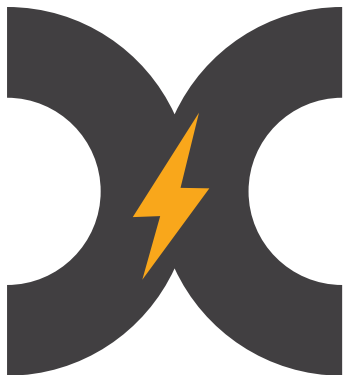
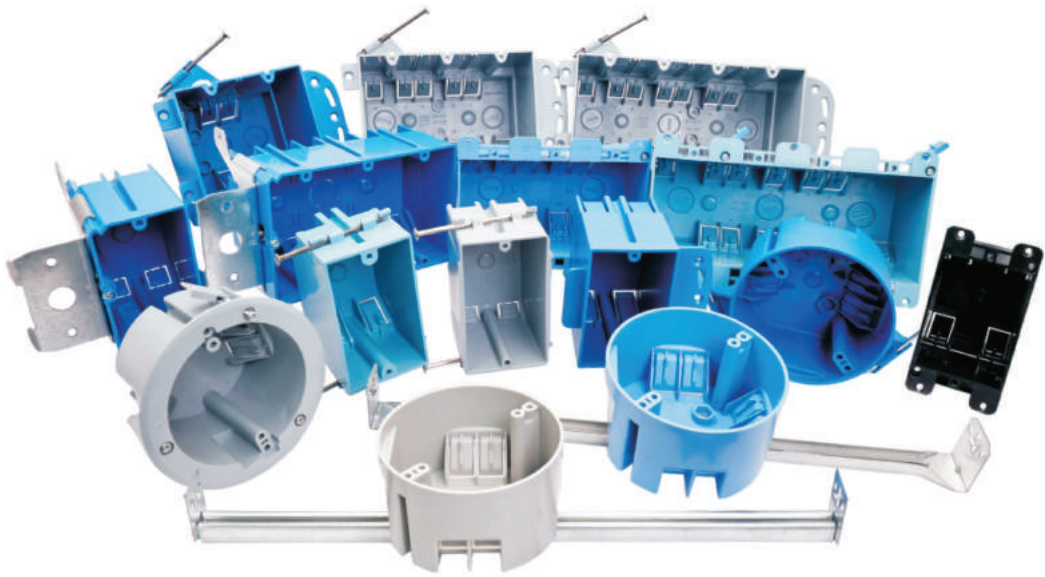
Part No.	Description	Size (L×W×D)
DCEXR-04	Four gang electrical outlet box extender	7.80"×4.28"×1.85"

Round



Part No.	Description	Size (L×W×D)
DCEXR-05	Ceiling box extender/Set back ceilings	4.92"×4.92"×1.50"

Nonmetallic Outlet Boxes, Flush-Device Boxes, and Covers [UL 514C:2014 Ed.4+R:18Aug2020]



**DIVISION
CONSTRUCTION
SUPPLY, INC.**